

Ascension (1984)

Location: Catholic Education Centre, Dufferin-Peel RCSS Board HQ, Mississauga, ON

Description: Chapel Window

Dimensions: H 720 cm; W 180 cm

Technique: Leaded antique glass with opal and transparent glasses

Fabricated by Sarah Hall Studio, Toronto, ON

Further info and sketches in Sarah Hall Archives; Toronto Reference Library; Baldwin Collection



Process



Site



In Situ

Trinity (1985)

Location: St. Matthias Anglican Church, Toronto, ON

Description: Narthex Clerestory Window

Dimensions: H 120 cm; W 240 cm

Technique: Leaded antique glass with cast prisms

Fabricated by Sarah Hall Studio, Toronto, ON

Further info and sketches in Sarah Hall Archives; Toronto Reference Library; Baldwin Collection



Design/Sketch



In Situ



Process/Site

Thanksgiving (1985)

Location: St. Matthias Anglican Church, Toronto, ON

Description: East Narthex Window

Dimensions: H 750 cm; W 150 cm

Technique: Leaded antique glass surrounding a natural wood cross

Fabricated by Sarah Hall Studio, Toronto, ON

Further info and sketches in Sarah Hall Archives; Toronto Reference Library; Baldwin Collection



Design



Site



In Situ

Healing Forms (1985)

Location: Chapel, Parkwood Hospital, London, ON

Description: Interior Glass Screen for the Centre of a Convalescent Chapel

Dimensions: H 210 cm; W 100 cm

Technique: Leaded antique glass with acid-etching and lamination

Fabricated by Sarah Hall Studio, Toronto, ON

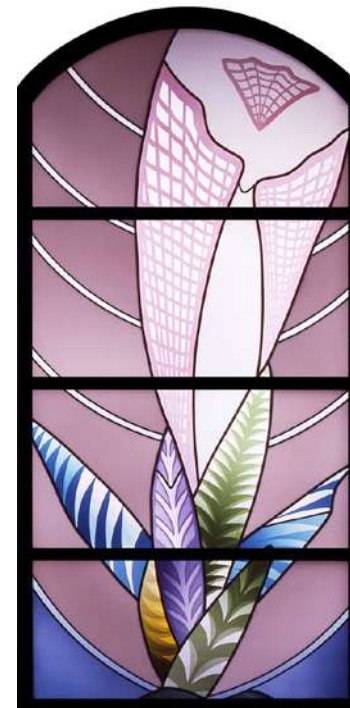
Further info and sketches in Sarah Hall Archives; Toronto Reference Library; Baldwin Collection



Design/Sketch



Site



In Situ

Mercy (1985)

Location: Grace Hospital, Scarborough, ON

Description: 2 Entryway Windows (light boxed)

Dimensions: H 152 cm X W 76 cm; H 152 cm X W 60 cm

Technique: Leaded antique glass with painting

Fabricated by Sarah Hall Studio, Toronto, ON

Further info and sketches in Sarah Hall Archives; Toronto Reference Library; Baldwin Collection



In Situ

Heavenly Jerusalem (1986)

Location: St. Leonard's Anglican Church, Toronto, ON

Description: East Chancel Window

Dimensions: H 240 cm; W 240 cm

Technique: Leaded antique glass with acid-etching, silver stain and sandblasting

Fabricated by Sarah Hall Studio, Toronto, ON

Further info and sketches in Sarah Hall Archives; Toronto Reference Library; Baldwin Collection



Design/Sketch



Detail



In Situ

Kyrie Eleison (1988-89)

Location: Mother Teresa Catholic Secondary School, Scarborough, ON

Description: Chapel Screen and Narthex Transom

Dimensions: Screen: H 220 cm; W 120 cm

Two Transom Windows: H 90 cm; W 75 cm (each)

Technique: Leaded antique glass, hand-painted and sandblasted

Fabricated by Sarah Hall Studio, Toronto, ON

Further info and sketches in Sarah Hall Archives; Toronto Reference Library; Baldwin Collection



Detail



In Situ

Road to Damascus (1990-95)

Location: St. Paul the Apostle Church, Burlington, ON

Description: Narthex Entryway, Weekday Chapel Window, Chapel of Reservation Doors, 12 Sanctuary Windows, Ambo, Altar, Font

Dimensions: *Road to Damascus* (Narthex Entryway): H 335 cm; W 304 cm

St. Michael at the End of Time (Weekday Chapel Window): H 152 cm; W 213 cm

Eucharist (Doors - Chapel of Reservation): H 152 cm; W 100 cm

Canadian Saints (Twelve Sanctuary Windows): H 180 cm; W 60 (each)

Ambo, Altar, Font – various dimensions in engraved glass

Technique: Leaded antique glass, hand-painted, etched, silver-stained and sandblasted
Fabricated by Sarah Hall Studio, Toronto, ON

Further info and sketches in Sarah Hall Archives; Toronto Reference Library; Baldwin Collection



Design/Sketch



Canadian Saints Sketch



Sketch - Left

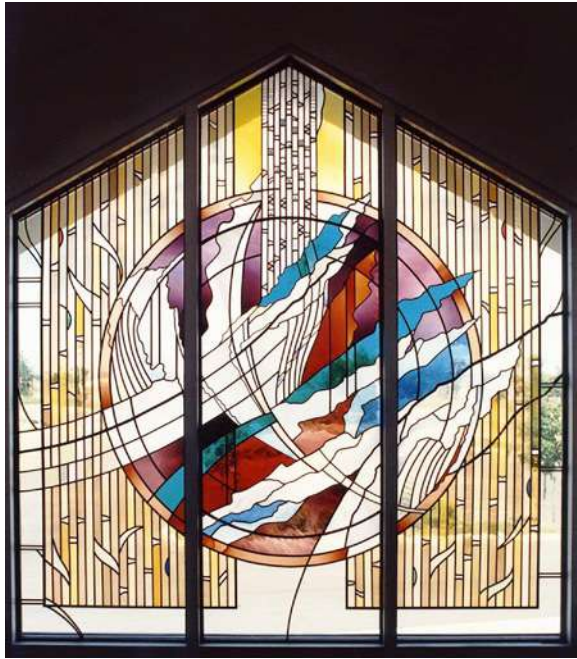


Sketch - Right



St. Michael Sketch

Road to Damascus (1990-95)



Road to Damascus in Situ



Eucharist in Situ



St. Michael in Situ



Altar Detail



Ambo Detail



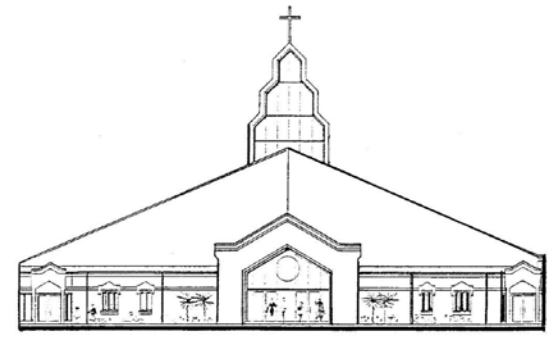
Font Detail



Eucharist Detail



Process



Site

All That Glitters (1990)

Location: Scotiabank HQ, Scotia Plaza, Toronto, ON

Description: Mural for Walkway / Subway Concourse on 3 walls

Dimensions: H 120 cm; L 3600 cm

Technique: Reverse painted mirrored & tempered glass with gold, silver & copper leaf
Fabricated by Sarah Hall Studio, Toronto, ON (in collaboration with Michael Poulton)

Further info and sketches in Sarah Hall Archives; Toronto Reference Library; Baldwin Collection



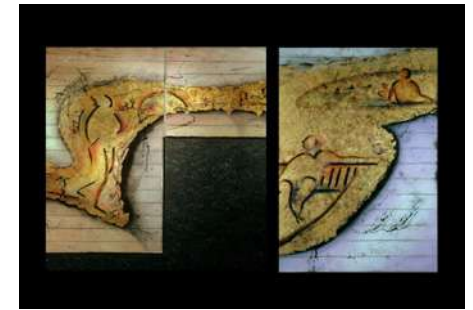
In Situ



Detail



Process



Detail



In Situ



Detail



Process

The Nursery Windows

Mother & Child Panel (1991)

Location: June Callwood Centre for Young Women, Toronto, ON

Description: 10 Optical Glass Windows for the Nursery

Dimensions: H 120 cm; W 650 cm (total)

Technique: Leaded glass with prisms, lenses, textured optical glass & sandblasting

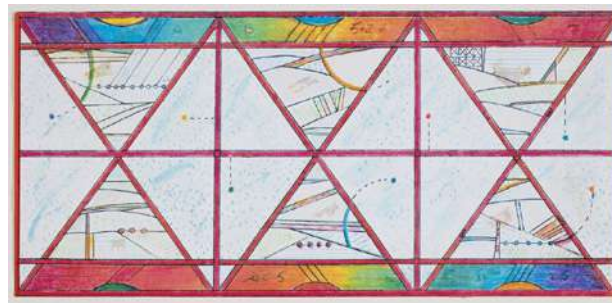
Mother & Child Panel – oil paint and gold leaf on glass, H 92; W 60

Fabricated by Sarah Hall Studio, Toronto, ON

Further info and sketches in Sarah Hall Archives; Toronto Reference Library; Baldwin Collection



Detail



Design/Sketch



Process



In Situ



Detail



Mother & Child

Light of the World Windows (1990-99)

Location: Immaculate Conception Church, Woodbridge, ON

Description: 38 Sanctuary and Chapel Windows

Dimensions: *Baptism & Immaculate Conception* (Four Niche Windows): H 213 cm; W 55 cm. H 90 cm; W 55 cm (each)

Light of the World (Nine Chancel Windows): H 64 cm; W 64 cm (each)

Star of Bethlehem (Two Transom Windows): H 60 cm; W 106 cm (each)

Revelations & The Fall (Two Transept Windows): H 731 cm; W 228 cm (each)

Annunciation, Flight, Crucifixion, Pentecost (Four Aisle Windows & Skylights): H 460 cm; W 460 cm

Creation & Heavenly Jerusalem (Two Rose Windows): Diameter 182 cm (each)

Luminous Portal (Chapel Doors & sidelights): H 245 cm; W 245 cm

Nativity (Two Chapel Windows): H 182 cm; W 75 cm (each)

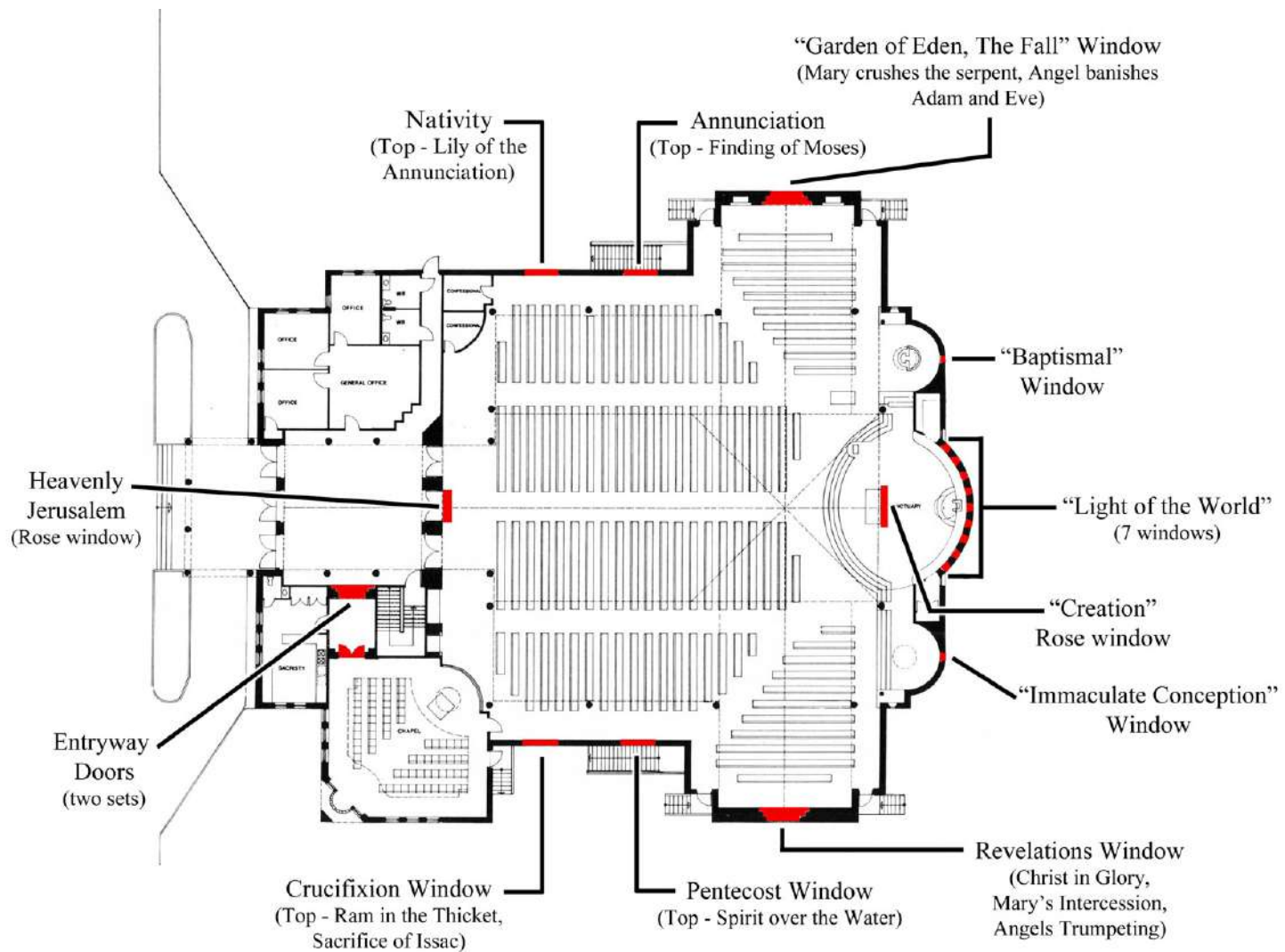
Litany of Mary (Eight Clerestory Windows): H 91 cm; W 91 cm (each)

Technique: Leaded antique glass: acid-etched, hand-painted, screen printed, sandblasted & gold-leafed

Fabricated by Sarah Hall Studio, Toronto, ON; (4 Aisle windows and skylights fabricated in collaboration with Sattler Studio, LaHave, NS)

Further info and sketches in Sarah Hall Archives; Toronto Reference Library; Baldwin Collection

Light of the World Windows (1990-99)



GROUND FLOOR PLAN

CHURCH OF THE IMMACULATE CONCEPTION

spectra architects inc.

Continued

Light of the World Windows (1990-99)



Heavenly Jerusalem



In Situ



In Situ



Detail



In Situ



Creation



Niche



Revelation Sketch



The Fall Sketch



Detail



Process

Light of the World Windows (1990-99)



Chapel Entry



Chapel Detail



Chapel Detail



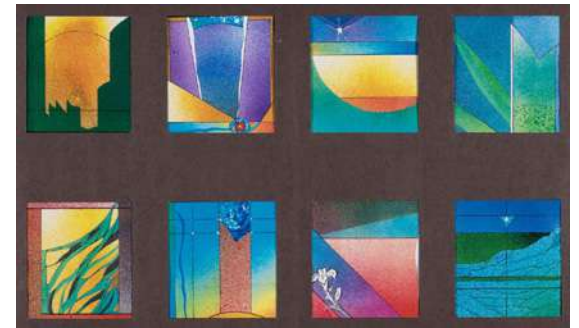
Chapel Detail



Detail



Process



Litany of Mary Sketches

Light of the World Windows (1990-99)



Annunciation Design



Flight to Egypt Design



Crucifixion Design



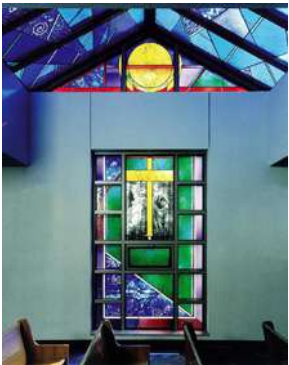
Pentacost Design



Detail



Detail



In Situ



In Situ



Skylight Detail



Site

Mother and Child (1992)

Location: Queensway General Hospital, Toronto, ON

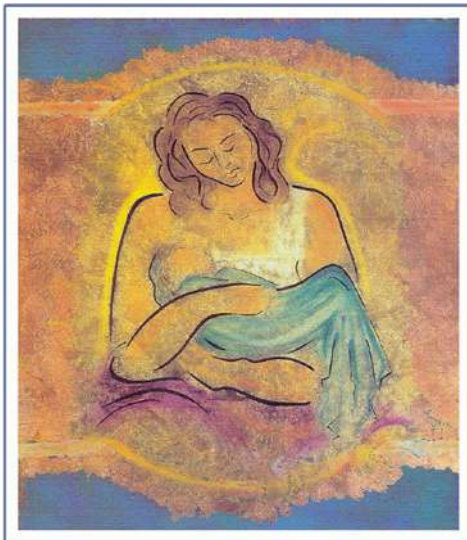
Description: Gold Leafed Wall & Donor Mural for Maternity Unit

Dimensions: H 120 cm; W 365 cm

Technique: Reverse painted & tempered glass with gold, silver & copper leaf

Fabricated by Sarah Hall Studio, Toronto, ON

Further info and sketches in Sarah Hall Archives; Toronto Reference Library; Baldwin Collection



Design/Sketch



Process



In Situ

New Covenant Windows (1992)

Location: Holy Trinity High School, Bradford, ON

Description: 14 Windows for the Chapel

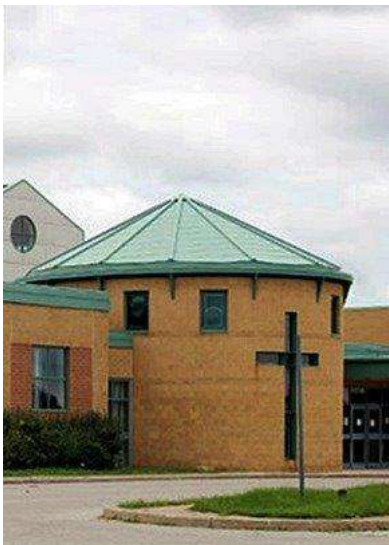
Dimensions: *Crucifixion* Window: H 430 cm; W 40 cm

Thirteen *Life of Christ* Windows: H 114 cm; W 76 cm (each)

Technique: Leaded glass with painting, silver-stain and acid-etching

Fabricated by Sarah Hall Studio, Toronto, ON

Further info and sketches in Sarah Hall Archives; Toronto Reference Library; Baldwin Collection



Site



Site



Nativity in Situ



Baptism in Situ



Detail

Following your Footprints (1992)

Location: Cardinal Carter High School, Aurora, ON

Description: 4 Windows for the Chapel, Holy Spirit Medallion, Wall Painting

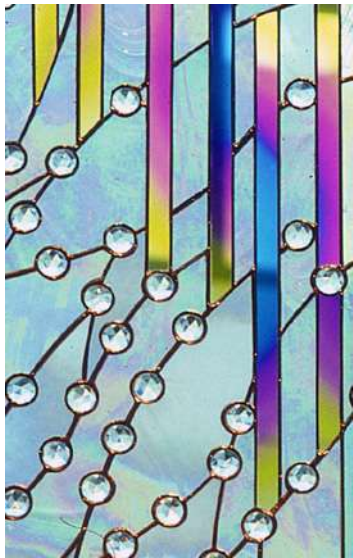
Dimensions: Four Chapel Windows: H 120 cm; W 50 cm (each)

Holy Spirit Medallion: H 260 cm; W 150 cm

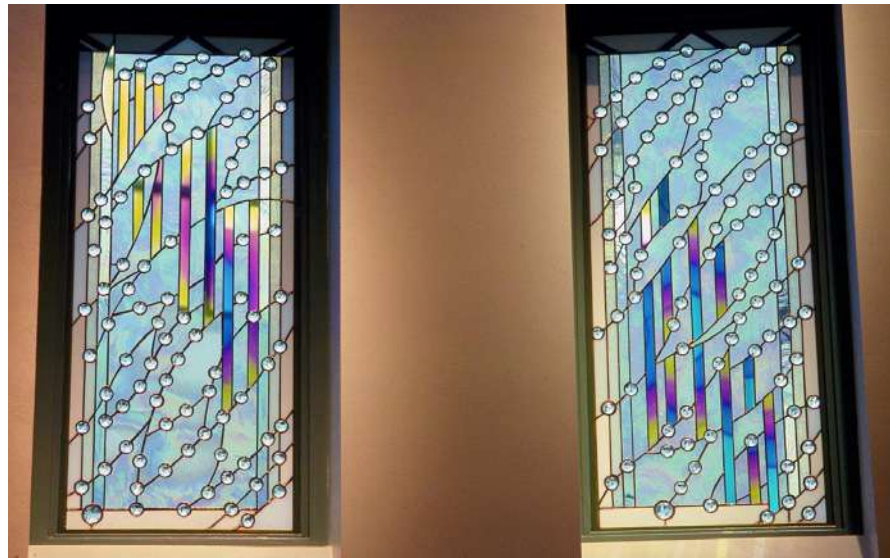
Technique: Copper foil with prisms and dichroic glass, Medallion - gold leaf and painting

Fabricated by Sarah Hall Studio, Toronto, ON

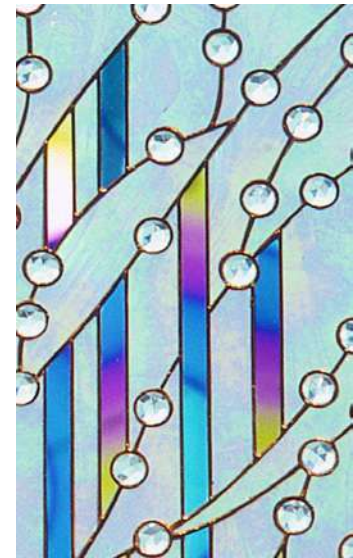
Further info and sketches in Sarah Hall Archives; Toronto Reference Library; Baldwin Collection



Detail



In Situ



Detail

Bankers Hours (1992)

Location: Canadian Imperial Bank of Commerce, Sarnia, ON

Description: Clerestory Window

Dimensions: H 180 cm; W 180 cm

Technique: Leaded antique glass: hand-painted, etched and silver stained with prisms

Fabricated by Sarah Hall Studio, Toronto, ON

Further info and sketches in Sarah Hall Archives; Toronto Reference Library; Baldwin Collection



Design/Sketch



Process



In Situ

The Rainbow Project (1993)

Location: W.J. Watson Public School, Keswick, ON

Description: Clerestory Skylight Windows for Library

Dimensions: H 150 cm; W 702 cm (7 panels)

Technique: Leaded antique glass: etched and sandblasted

Fabricated by Sarah Hall Studio, Toronto, ON

Further info and sketches in Sarah Hall Archives; Toronto Reference Library; Baldwin Collection



Detail



Detail



In Situ



Detail

New Light Triptych (1993)

Location: Queen Elizabeth Hospital, Toronto, ON

Description: Quiet Room Windows & Wall Mural

Dimensions: Three Chapel Windows: H 150 cm; W 60 cm (each)

Technique: Leaded antique and textured glass; painted gold leaf mural with sandblasting

Fabricated by Sarah Hall Studio, Toronto, ON

Further info and sketches in Sarah Hall Archives; Toronto Reference Library; Baldwin Collection



Design/Sketch



Detail



In Situ

Prince of Peace Windows (1993)

Location: Prince of Peace Elementary School, Keswick, ON

Description: 9 windows for Foyer Rotunda

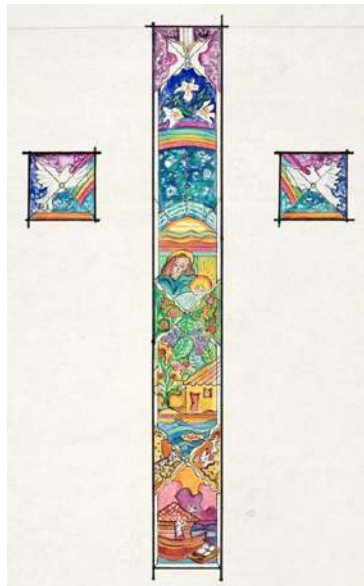
Dimensions: Cross Window: H 250 cm; W 40 cm

Eight Rotunda Windows: H 250 cm; W 40 cm (each)

Technique: Leaded antique glass: hand-painted, etched and silver stained

Fabricated by Sarah Hall Studio, Toronto, ON

Further info and sketches in Sarah Hall Archives; Toronto Reference Library; Baldwin Collection



Design/Sketch



Process



Detail



In Situ

Radiance, Reflection, Revelation (1993)

Location: First Unitarian Congregation, Toronto, ON

Description: Tower Window and 3 Library Windows

Dimensions: Tower Window: H 1524 cm; W 365 cm

Three Library Windows: H 120 cm; W 60 cm (each)

Technique: Leaded antique glass with bevels, textured glass and dichroic

Fabricated by Sarah Hall Studio, Toronto, ON

Further info and sketches in Sarah Hall Archives; Toronto Reference Library; Baldwin Collection



Model



In Situ



Process



Site



Detail



Detail

Nanabush & The Butterflies (1993)

Location: Bruce Peninsula Hospital, Wiarton, ON

Description: Entryway Clerestory Window

Dimensions: H 458 cm; W 245 cm

Technique: Leaded antique glass: hand-painted, etched and silver stained

Fabricated by Sarah Hall Studio, Toronto, ON

(in collaboration with Cape Crocker Chippewas of Nawash)

Further info and sketches in Sarah Hall Archives; Toronto Reference Library; Baldwin Collection



Process



Detail



In Situ

Alleluia (1994-97)

Location: Fox Point Lutheran Church, Milwaukee, WI

Description: 1 Chancel Window, 8 Nave Windows, 6 Narthex Windows

Dimensions: *Resurrection* (Chancel Triptych): H 245 cm; W 152 cm (each)

Liturgical Seasons & Music (Eight Nave Windows): H 180 cm; W 90 cm (each)

Prayer (Six Narthex Windows): H 65 cm; W 65 cm (each)

Technique: Leaded antique glass: hand-painted, etched and silver stained

Fabricated by Sarah Hall Studio, Toronto, ON

Further info and sketches in Sarah Hall Archives; Toronto Reference Library; Baldwin Collection



Design/Sketch



Process



Nave



Detail



Site



Nave



Nave



In Situ